



EXPERIENCE THE BEAUTIFUL
LEAP INTO LUXURY



GOLDFINCH
STATE
Affluence Redefined

RERA Registration No.
UPRERAPRJ8691 (Phase-1 – Tower 2 to 5)



Paarth Republic - Smart Living for A Smart Generation

- 17 Acre Commercial business district with Mall, Multiscreen Multiplex, Hotel & Office Spaces.
- High quality building construction
- Cricket Stadium - PCEC
- Club Capitol - planned in 2 lacs sq.ft. area
- Intelligent Traffic Management System
- Optical Fiber Cable in Entire Township
- Wi-Fi Enabled Zone
- Water Harvesting & Self Sustained Natural Living
- Employment oriented
- Gated Security





GOLDFINCH

STATE

Affluence Redefined

***THE GOLDFINCH STATE,
YOUR PURSUIT OF HAPPINESS ENDS HERE.***

The Goldfinch State is full of bright and cheerful hues, showcasing Mid-rise Apartments. Just like the Goldfinch bird, this independent state too is in love with beautiful green areas adorned with blooming flowers & landscaped nature. Goldfinch Towers, with its classy interiors and specifications, are truly designed for high fliers.

Beautifully crafted by renowned architects, this G+14 Floors of plush living enjoys its independent clubhouse with numerous entertainment avenues. Being an inseparable part of Paarth Republic, Goldfinch also enjoys all the amenities and facilities of the township. Its thoughtful design, urban planning and grand features will surely lure residents from far off places to have a nest here.



FEATURES TO ENSURE LIFETIME HAPPINESS

Hypnotic greens to heal your senses

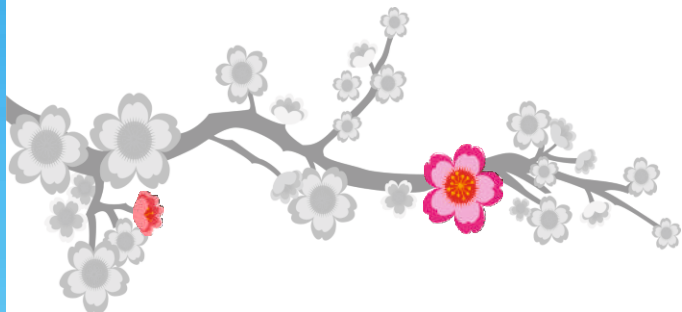
Goldfinch Towers have beautifully planned greenery blessed with breathtaking water bodies all around the apartments. Luring landscape view from windows will surely convince you to own a living here.

Smartly designed central park to walk, play & socialize

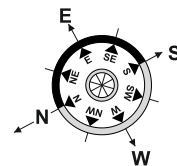
In Goldfinch Towers, mornings begin with the alarm clock of the real 'cuckoo', followed by a walk in the awe-inspiring central park. A separate kids' play area with swings and slides is another special attraction for kids as well as their parents.

Urban clubbing to uplift your spirits

Boredom has no place in Goldfinch Towers as it hosts city's best clubbing facility. The premium club at Goldfinch has every modern amenity and facility you can think of. Apart from indoor and outdoor sports facilities, it also has a gymnasium, swimming pool and a fully equipped party hall.



LAYOUT PLAN OF GOLDFINCH TOWER

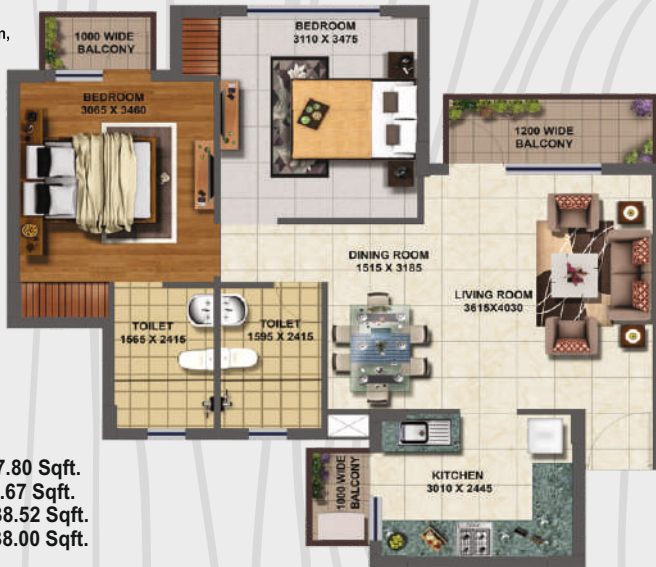


TOWNSHIP MASTER PLAN

UNIT PLANS

ACCOMMODATION:

2 Bed Rooms, Drawing / Dining Room, Kitchen,
2 Toilets, Utility & 2 Balconies



TOWER-2 2BHK UNIT

CARPET AREA = 62.04 Sqmt. = 667.80 Sqft.
BALCONY AREA = 7.68 Sqmt. = 82.67 Sqft.
BUILT UP AREA = 77.90 Sqmt. = 838.52 Sqft.
SUPER AREA = 105.72 Sqmt. = 1138.00 Sqft.

ACCOMMODATION:

2 Bed Rooms, Drawing / Dining Room, Kitchen,
2 Toilets, Utility & 2 Balconies



TOWER-2 2BHK UNIT

CARPET AREA = 62.04 Sqmt. = 667.80 Sqft.
BALCONY AREA = 8.19 Sqmt. = 88.16 Sqft.
BUILT UP AREA = 78.38 Sqmt. = 843.68 Sqft.
SUPER AREA = 106.38 Sqmt. = 1145.00 Sqft.

ACCOMMODATION:

3 Bed Rooms, Drawing Room, Dining Room,
Kitchen, 3 Toilets & 3 Balconies



TOWER-3, 4, 5 & 6 3 BHK UNIT TYPE-2

CARPET AREA = 82.81 Sqmt. = 891.37 Sqft.
BALCONY AREA = 6.93 Sqmt. = 74.59 Sqft.
BUILT UP AREA = 98.63 Sqmt. = 1061.65 Sqft.
SUPER AREA = 131.00 Sqmt. = 1410 Sqft.

TOWER-3, 4, 5 & 6 3BHK + SERVANT TYPE-1

CARPET AREA = 96.18 Sqmt. = 1035.28 Sqft.
BALCONY AREA = 10.05 Sqmt. = 108.18 Sqft.
BUILT UP AREA = 116.26 Sqmt. = 1251.42 Sqft.
SUPER AREA = 154.41 Sqmt. = 1662 Sqft.



ACCOMMODATION:

3 Bed Rooms, Drawing Room, Dining Room, Kitchen,
Pooja, Foyer, Dress, 3 Toilets,
3 Balconies & Servant Room

SPECIFICATIONS

Structure

External Finish Drawing & Dining

Floor
walls
Ceiling
Split AC

Master Bed Room

Floor

walls
Ceiling
windows AC

Bed Rooms

Floor
walls & Ceiling

Kitchen

Floor
Platform

Walls/ Dado

Water Supply
Fittings
Water Purifier

Bathrooms

Floors
Walls
Fittings & Fixtures

Balconies

Floor

Staircase & Common Passage

Floor
Walls & Floors

Doors & Windows

Entrance Door

Internal Doors

Balcony Doors/ Windows

Electrical

Point & Wining

Switches

Security System

Club Facilities

Special Facilities

Earthquake resistant RCC frame structure
Weather proof Paint/ Texture Paint

Vitrified Tiles
Painted with pleasing shade of OBD
OBD
Electrical points will be provided

Vitrified Tiles

Painted with pleasing shade of OBD
OBD
Points will be provided

Vitrified Tiles
OBD

Anti skid Ceramic Tiles
Pre- polished Granite Stone with simple sink
with drain board
Ceramic Tiles upto two feet height above
kitchen Counter, balance OBD
Provision for Hot and Cold water supply
CP fittings with mixture
RO system

Anti skid Ceramic Tiles
Glazed Ceramic Tiles up to 7 feet Height
Standard WC, Wash Basin, towel rail, hot and
cold water provision

Anti skid Ceramic Tiles

Granite/ Marble / Kota Stone
Painted with pleasing shade of OBD

Decorative Flush Door painted/ polished
Video Door Phone
Well seasoned hardwood frame Skin moulded
shutter duly painted
Aluminium powder coated

copper concealed wiring in all rooms
sufficient light oints, 6/15 A sockets A/C points
in living/dining and bed
rooms provision for TV etc
Modular Switches
Gated Community, Fire fighting system & intercom
Swimming pool, Gymnasium, Indoor games
like: Aerobics room. Pool table etc, Tennis/ Multi-
purpose court, library/ waiting Open/Stilt/ Basement
car parking Children's play area Beautifully
landscaped Central Park with water bodies
Wi-Fi enabled campus/ Piped water
Supplies/ Waste management

Proposed Brands

RAK/ Kajaria/ Somany/Johnson/Equivalent other brand
Nerolac/Berger/Asian or Equivalent
Nerolac/Berger/Asian or Equivalent

RAK/Kajaria/Somany/Johnson/Equivalent
other brand
Nerolac/Bergaer/Asian or Equivalent
Nerolac/Bergaer/Asian or Equivalent

RAK/ Kajaria/ Somany/Johnson/Equivalent other brand
Nerolac/Berger/Asian or Equivalent

RAK/ Kajaria/ Somany/Johnson/Equivalent other brand

Nirali/Lotus/Jaina/Neelkamal or Equivalent other brands

Parryware/ Hindware or Equivalent
Kent/ Eureka Forbes or Equivalent

RAK/ Kajaria/ Somany/Johnson/Equivalent other brand
RAK/ Kajaria/ Somany/Johnson/Equivalent other brand

CP Fittings: Jaquar/ Parryware/ Hindware/or Equivalent
China Wares : Hindware/ Parryware or Equivalent

RAK/ Kajaria/ Somany/Johnson/Equivalent other brand

Nerolac/Berger/Asian or Equivalent

Crabtree/ Anchor/ Havells or Equivalent



Actual Construction Images



Goldfinch



Humming State



Asha-Abha



Gardenia



Anant



Anmol



Carnation

Actual Pictures of Township



Entrance Gate



Kids' Play Area



Cricket Stadium (PCEC)

Location Map



not to scale

Loan Approved from



Toll Free No.: 1800 102 5914 | Website: www.paarthinfra.com

Site Office: Paarth Republic, Miranpur Pinwat, Lucknow-Kanpur Road, Lucknow-226401 (Open All 7 Days)

Regional Office: 3rd Floor, Eldeco Corporate Tower, Vibhuti Khand, Gomti Nagar, Lucknow; Phone: 4500500

Registered Office: Paarth Infrabuild Pvt. Ltd. Flat No. 311 to 315, Naurang House, 21 K.G. Marg, New Delhi-110001

Contact Office 2: A-6, Sector-58, Noida Uttar Pradesh-201301

Any information related to the project will be available at our office or uprera website www.up-rera.in

