



# Humming

STATE

RERA Registration No.  
**UPRERAPRJ8271(PH-1), UPRERAPRJ8168(PH-2)**





# Humming

## STATE

Humming State, part of Paarth Republic Integrated Township, is a symbol of elegant lifestyle with astonishing features that will make your life saga of happiness and contentment as the name says itself it brings luxurious lifestyle closer to you. The entire state includes Five Residential Towers, which is a combination of S+22 to G+23 floors. Make it your preferred lifestyle by taking a stroll in the central green park here specially designed for you.

Humming Phase 1 includes three towers (Towers C, D & E) of G + 23 floors comprising of 1BHK & 2BHK unit types.

# FEATURES

TO ENSURE LIFETIME HAPPINESS



## Simplifying Luxury For You

### Facilities in close vicinity

Life at Humming State is full of convenience. It has iconic Tower, world class club and a glittering mall at walking distance. You will have a feel of international style living at Humming State.

### Luxury redefined

Luxurious living finds a new meaning at Humming State. The apartments are studded with luxurious features that elevate lifestyle to a new level. It promises great comfort for everyone with stunning designs and decor.

### Highrise accommodation

Humming State is an astonishing example of highrise accommodation that has become a hallmark for best quality urban living. Chose this place to ensure an unmatched lifestyle. Gymnasium, swimming pool and a fully equipped party hall.

### Best value for money

Humming State bring to you an array of features and facilities that you can now afford very conveniently. Your aspiration of having a truly world class lifestyle has just got more simpler for you.



PAARTH  
REPUBLIC  
A Revolutionary Mega Township



### **1 BHK UNIT PLAN TOWER-C, D & E**

CARPET AREA = 342.83 Sqft.  
BALCONY AREA = 16.15 Sqft.  
SUPER AREA = 530.00 Sqft.



### **2 BHK UNIT PLAN TOWER-C, D & E**

CARPET AREA = 590.51 Sqft.  
BALCONY AREA = 40.58 Sqft.  
SUPER AREA = 910.00 Sqft.



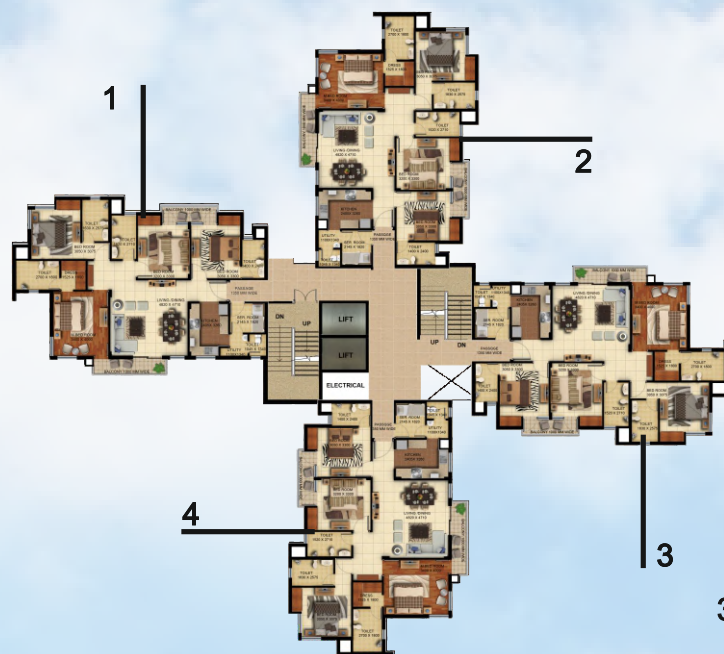
### **4 BHK UNIT PLAN TOWER-A & B**

CARPET AREA = 1236.77 Sqft.  
BALCONY AREA = 111.94 Sqft.  
SUPER AREA = 1950.00 Sqft.

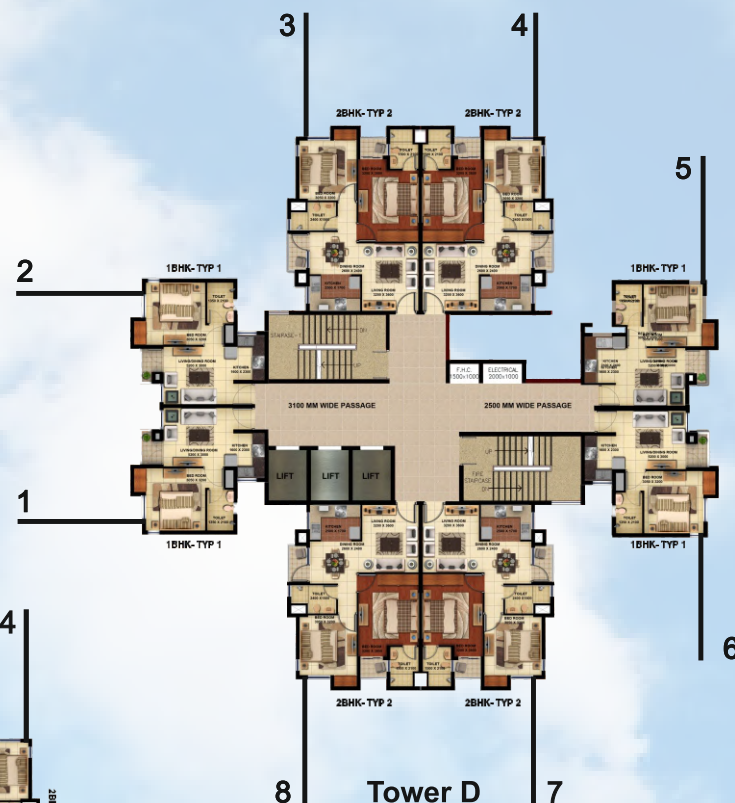




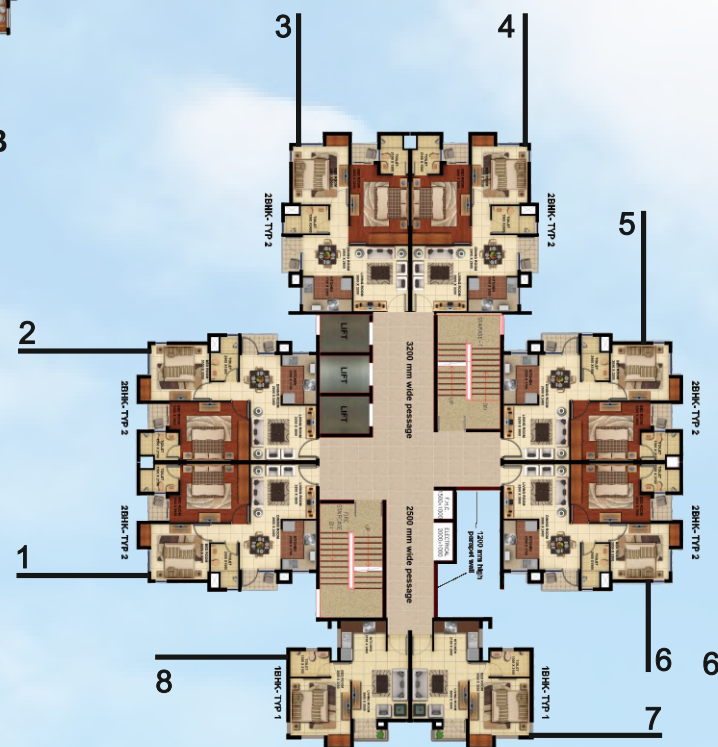
# FLOOR PLANS



Tower A&B



Tower D



Tower C&E

## Humming Deluxe

### Structure External Finish Drawing & Dining

Floor  
walls  
Ceiling  
Split AC

### Master Bed Room

Floor  
  
walls  
Ceiling  
windows AC

### Bed Rooms

Floor  
walls & Ceiling

### Kitchen

Floor  
Platform  
  
Walls/ Dado

Water Supply  
Fittings  
Water Purifier

### Bathrooms

Floors  
Walls  
Fittings & Fixtures

### Balconies

Floor

### Staircase & Common Passage

Floor  
Walls & Floors

### Doors & Windows

Entrance Door

Internal Doors

Balcony Doors/Windows

### Electrical

Point & Wiring

Switches

### Security System

### Club Facilities

### Special Facilities

Earthquake resistant RCC frame structure  
Weather proof Paint/ Texture Paint

Vitrified Tiles  
Painted with pleasing shade of OBD  
OBD  
Electrical points will be provided

Vitrified Tiles  
  
Painted with pleasing shade of OBD  
OBD  
Points will be provided

Vitrified Tiles  
OBD  
  
Anti skid Ceramic Tiles  
Pre- polished Granite Stone with simple sink  
with drain board  
Ceramic Tiles upto two feet height above  
kitchen Counter, balance OBD  
Provision for Hot and Cold water supply  
CP fittings with mixture  
RO system

Anti skid Ceramic Tiles  
Glazed Ceramic Tiles up to 7 feet Height  
Standard WC, Wash Basin, towel rail, hot and  
cold water provision

Anti skid Ceramic Tiles

Granite/ Marble / Kota Stone  
Painted with pleasing shade of OBD

Decorative Flush Door painted/ polished  
Video Door Phone  
Well seasoned hardwood frame Skin moulded  
shutter duly painted  
Aluminium powder coated

copper concealed wiring in all rooms  
sufficient light oints, 6/15 A sockets A/C points  
in living/dining and bed  
rooms provision for TV etc  
Modular Switches  
Gated Community, Fire fighting system & intercom  
Swimming pool, Gymnasium, Indoor games  
like: Aerobics room. Pool table etc, Tennis/ Multi-  
purpose court, library/ waiting Open/Stilt/ Basement  
car parking Children's play area Beautifully  
landscaped Central Park with water bodies  
Wi-Fi enabled campus/ Piped water  
Supplies/ Waste management

### Proposed Brands

RAK/ Kajaria/ Somany/Johnson/Equivalent other brand  
Nerolac/Berger/Asian or Equivalent  
Nerolac/Berger/Asian or Equivalent

RAK/Kajaria/Somany/Johnson/Equivalent  
other brand  
Nerolac/Bergaer/Asian or Equivalent  
Nerolac/Bergaer/Asian or Equivalent

RAK/ Kajaria/ Somany/Johnson/Equivalent other brand  
Nerolac/Berger/Asian or Equivalent

RAK/ Kajaria/ Somany/Johnson/Equivalent other brand  
  
Nirali/Lotus/Jaina/Neelkamal or Equivalent other brands

Parryware/ Hindware or Equivalent  
Kent/ Eureka Forbes or Equivalent

RAK/ Kajaria/ Somany/Johnson/Equivalent other brand  
RAK/ Kajaria/ Somany/Johnson/Equivalent other brand

CP Fittings: Jaquar/ Parryware/ Hindware/or Equivalent  
China Wares : Hindware/ Parryware or Equivalent

RAK/ Kajaria/ Somany/Johnson/Equivalent other brand

Nerolac/Berger/Asian or Equivalent

Crabtree/ Anchor/ Havells or Equivalent

Below mentioned specifications  
shall not be the part of Humming Regular units

1	Internal paint (Wall, Ceiling & Doors)
2	Granite Kitchen Counter
3	Internal Doors with Fittings
4	Tile Works
5	CP Fitting & Sanitary Ware
6	Switches with Plate
7	Lightning Fixture
Other Specification will be the same as given in Humming Deluxe	



## Actual Construction Images



Goldfinch



Humming State



Asha-Abha



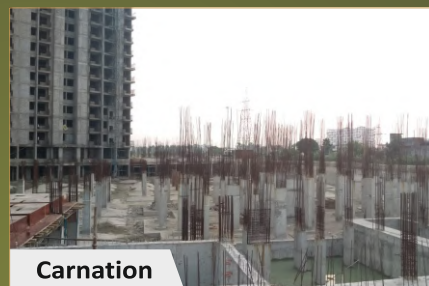
Gardenia



Anant



Anmol



Carnation

## Actual Pictures of Township



Entrance Gate



Kids' Play Area



Cricket Stadium (PCEC)

**Toll Free No.: 1800 102 5914 | Website: [www.paarthinfra.com](http://www.paarthinfra.com)**

**Site Office: Paarth Republic, Miranpur Pinwat, Lucknow-Kanpur Road, Lucknow-226401 (Open All 7 Days)**

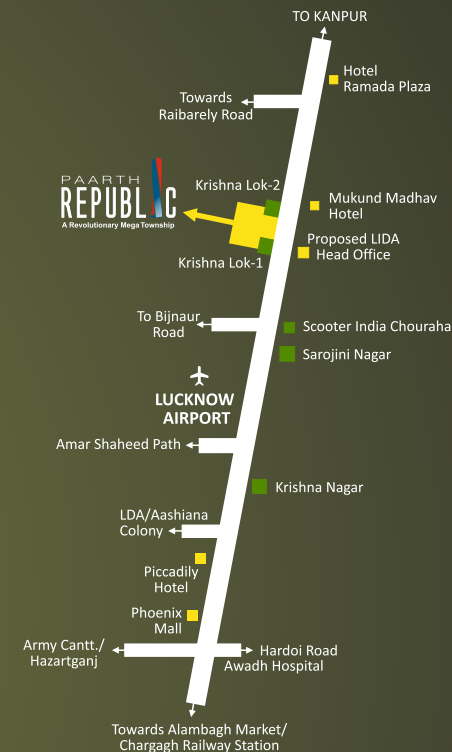
**Regional Office: 3rd Floor, Eldeco Corporate Tower, Vibhuti Khand, Gomti Nagar, Lucknow; Phone: 4500500**

**Registered Office: Paarth Infrabuild Pvt. Ltd. Flat No. 311 to 315, Naurang House, 21 K.G. Marg, New Delhi-110001**

**Contact Office 2: A-6, Sector-58, Noida Uttar Pradesh-201301**

**Any information related to the project will be available at our office or uprera website [www.up-rera.in](http://www.up-rera.in)**

## Location Map



not to scale

## Loan Approved from

